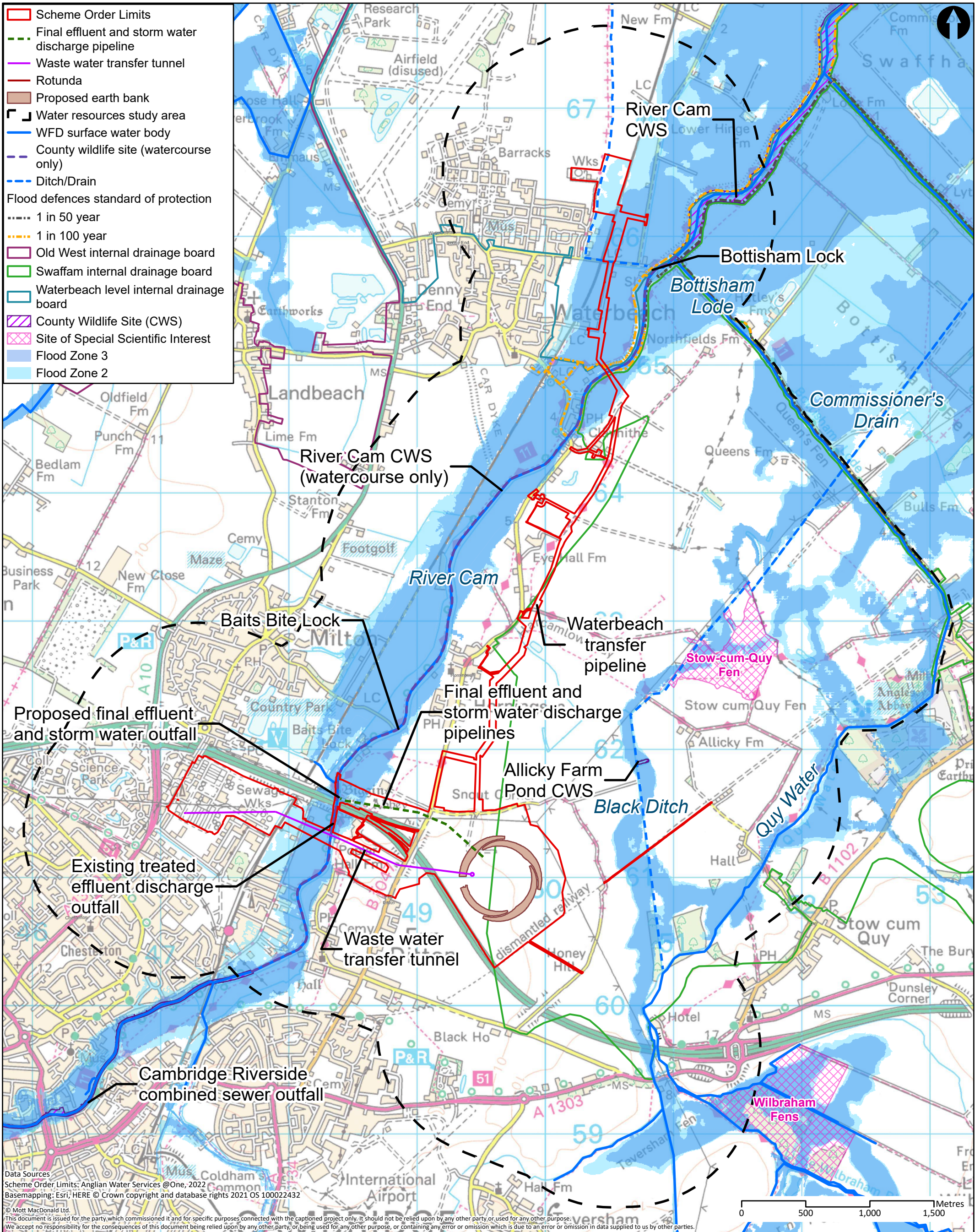


Cambridge Waste Water Treatment Plant Relocation Project
Anglian Water Services Limited

Book of Figures – Water Resources

Application Document Reference: 5.3.20
PINS Project Reference: WW010003
APFP Regulation No. 5(2)a

Revision No. 01
April 2023



Data Sources
 Scheme Order Limits: Anglian Water Services @One, 2022
 Basemapping: Esri, HERE © Crown copyright and database rights 2021 OS 100022432
 © Mott MacDonald Ltd.
 This document is issued for the party, which commissioned it and for specific purposes connected with the captioned project only. It should not be relied upon by any other party, or used for any other purpose.
 We accept no responsibility for the consequences of this document being relied upon by any other party, or being used for any other purpose, or containing any error or omission which is due to an error or omission in data supplied to us by other parties.

M M
MOTT MACDONALD

22 Station Road
 Cambridge CB1 2JD
 United Kingdom

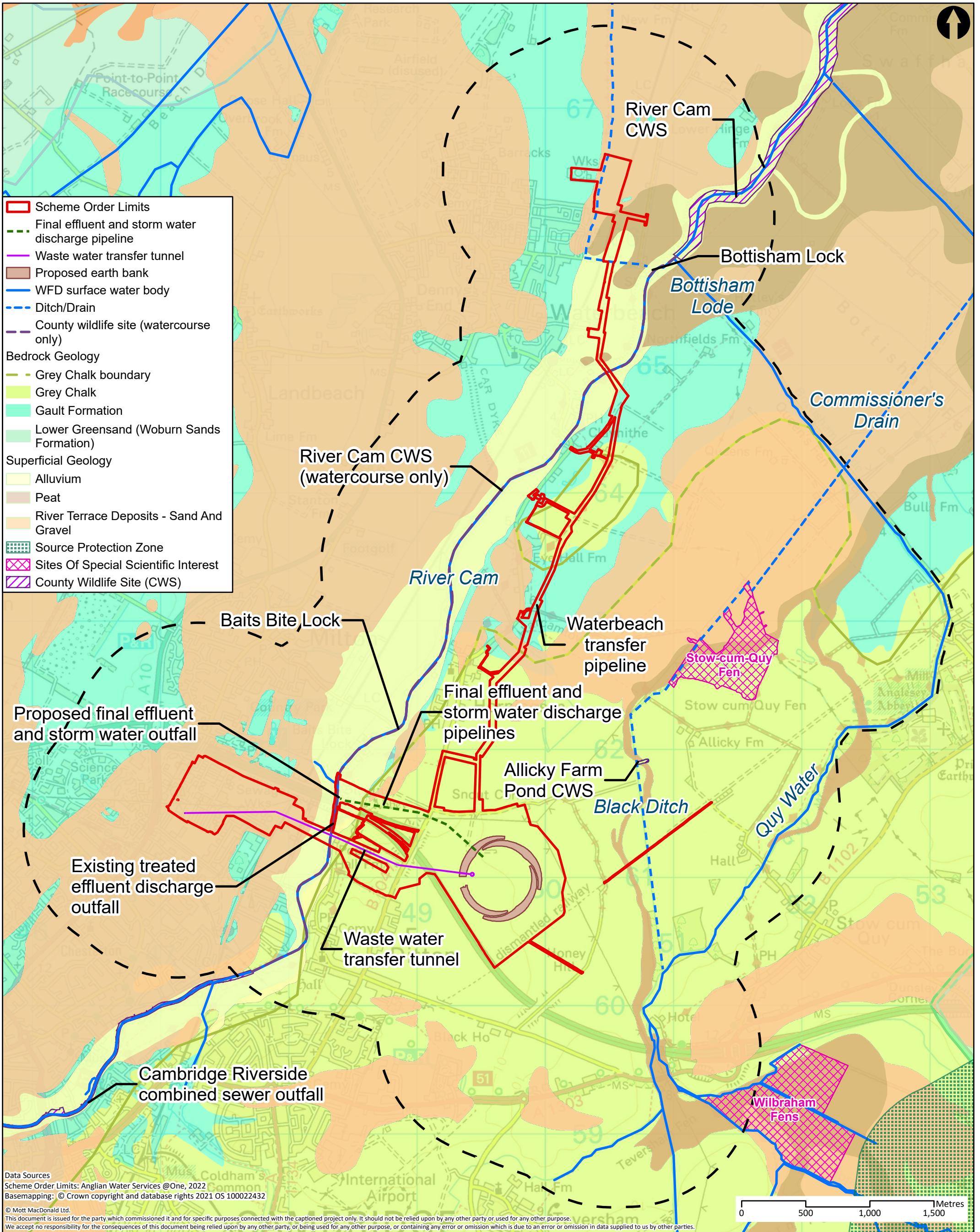
T +44 (0)20 8774 2000
 F +44 (0)20 8681 5706
 W mottmac.com

Client					
Rev	Date	Drawn	Description	Ch'k'd	App'd
P1	27/10/22	NC	First Draft	MC	CS

Title
 Cambridge Waste Water Treatment Plant
 Relocation Project
 Environmental Statement
 Hydrology

Drawing Number
 Figure 20.1

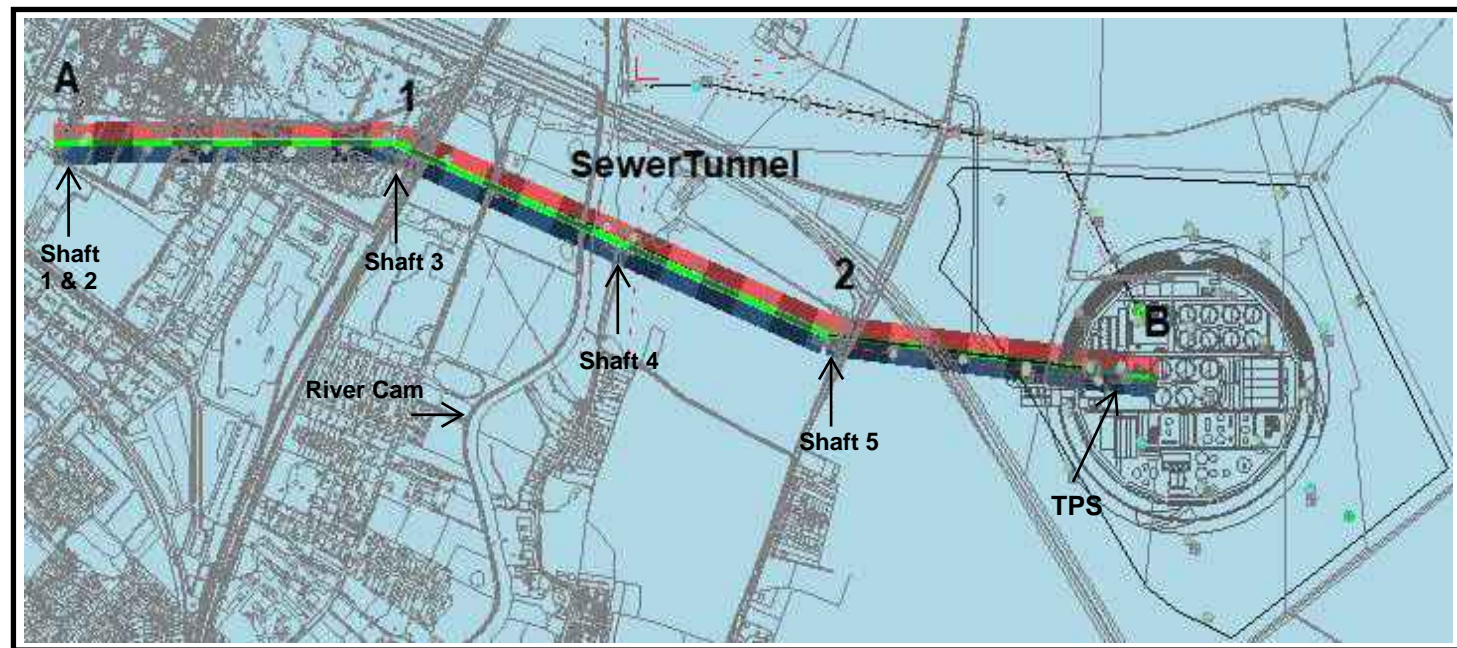
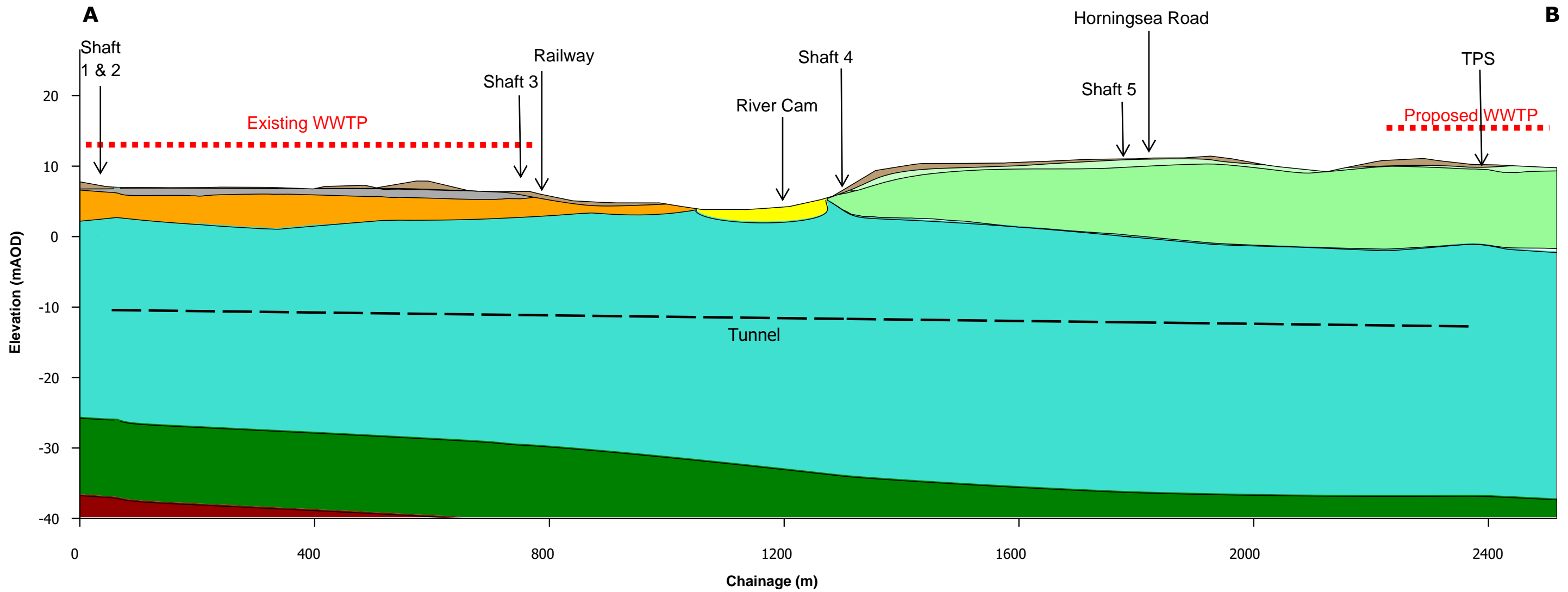
Drawn	NC	
Checked	MC	
Approved	CS	
Scale at A3	1:27,000	
Security	Status	Rev
STD	PRE	P1



Data Sources
 Scheme Order Limits: Anglian Water Services @One, 2022
 Basemapping: © Crown copyright and database rights 2021 OS 100022432
 © Mott MacDonald Ltd.
 This document is issued for the party which commissioned it and for specific purposes connected with the captioned project only. It should not be relied upon by any other party, or used for any other purpose.
 We accept no responsibility for the consequences of this document being relied upon by any other party, or being used for any other purpose, or containing any error or omission which is due to an error or omission in data supplied to us by other parties.

	22 Station Road Cambridge CB1 2JD United Kingdom T +44 (0)20 8774 2000 F +44 (0)20 8681 5706 W mottmac.com		Client 			Title Cambridge Waste Water Treatment Plant Relocation Project Environmental Statement Combined geology			Drawn NC Checked MC Approved CS Scale at A3 1:27,000									
	<table border="1"> <thead> <tr> <th>Rev</th> <th>Date</th> <th>Drawn</th> <th>Description</th> <th>Ch'k'd</th> <th>App'd</th> </tr> </thead> <tbody> <tr> <td>P1</td> <td>25/10/22</td> <td>NC</td> <td>First Draft</td> <td>MC</td> <td>CS</td> </tr> </tbody> </table>	Rev	Date	Drawn	Description	Ch'k'd	App'd	P1	25/10/22	NC	First Draft	MC	CS	Drawing Number Figure 20.2			Security STD	Status PRE
Rev	Date	Drawn	Description	Ch'k'd	App'd													
P1	25/10/22	NC	First Draft	MC	CS													

Figure 20.3 Tunnel Alignment

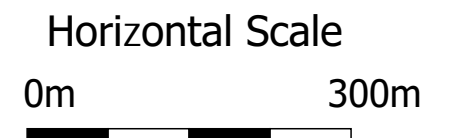


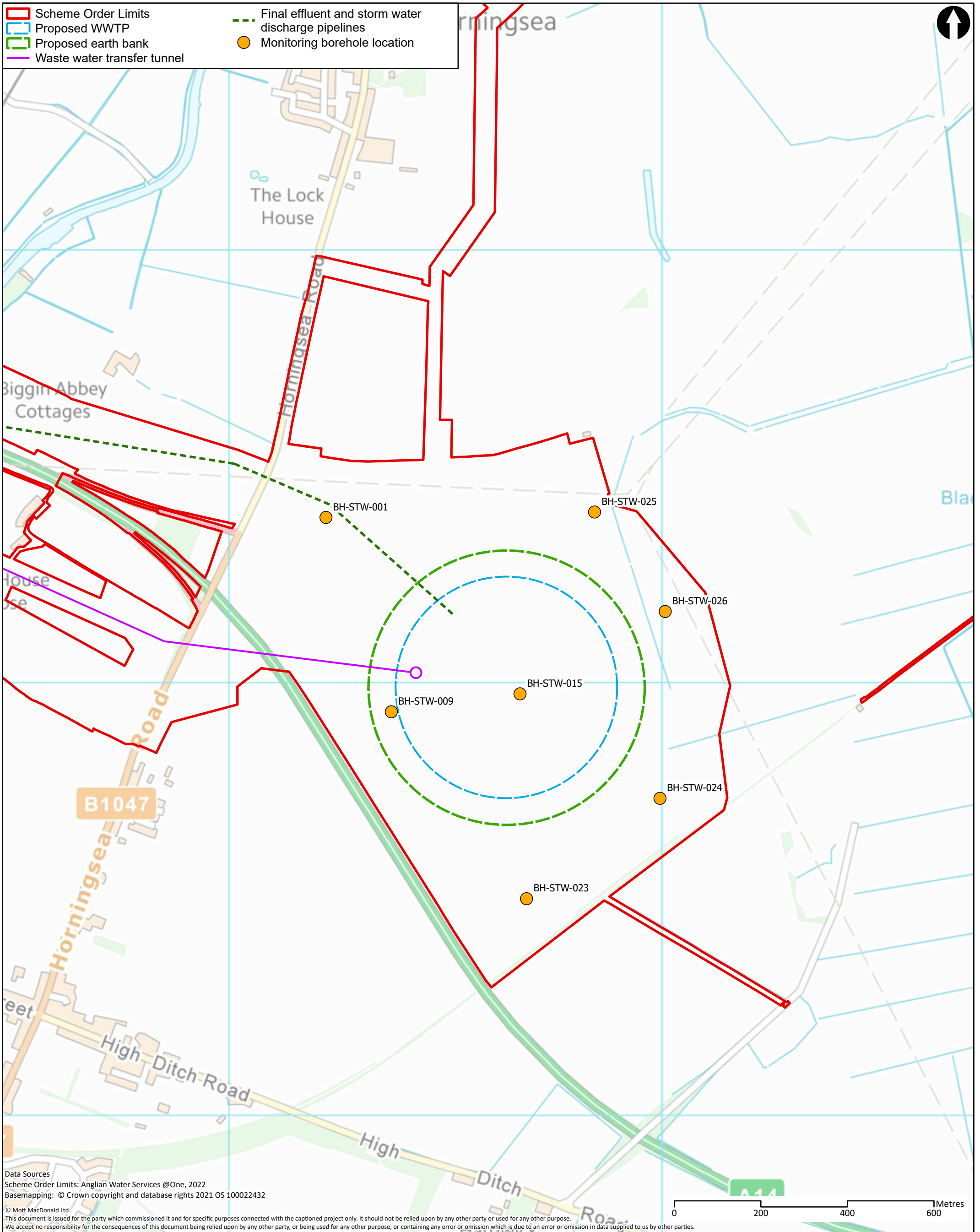
Legend

Strata

- Topsoil
- Made Ground
- Alluvium
- River Terrace Deposits
- Weathered Chalk
- Lower Greensand
- Kimmeridge Clay
- Cambridge Greensand
- Gault Clay
- West Melbury Marly Chalk

Vertical exaggeration: 12x





Data Sources
 Scheme Order Limits: Anglian Water Services @One, 2022
 Basemapping: © Crown copyright and database rights 2021 OS 100022432

© Mott MacDonald Ltd.
 This document is issued for the party which commissioned it and for specific purposes connected with the captioned project only. It should not be relied upon by any other party or used for any other purpose.
 We accept no responsibility for the consequences of this document being relied upon by any other party, or being used for any other purpose, or containing any error or omission which is due to an error or omission in data supplied to us by other parties.

<p>22 Station Road Cambridge CB1 2JD United Kingdom</p> <p>T +44 (0)20 8774 2000 F +44 (0)20 8681 5706 W mottmac.com</p>	Client 					Title Cambridge Waste Water Treatment Plant Relocation Project Environmental Statement Monitoring boreholes			Drawn	CD												
	<table border="1"> <thead> <tr> <th>Rev</th> <th>Date</th> <th>Drawn</th> <th>Description</th> <th>Ch'k'd</th> <th>App'd</th> </tr> </thead> <tbody> <tr> <td>P1</td> <td>28/07/22</td> <td>CD</td> <td>First Draft</td> <td>MC</td> <td>CS</td> </tr> </tbody> </table>					Rev	Date	Drawn	Description	Ch'k'd	App'd	P1	28/07/22	CD	First Draft	MC	CS	Checked Approved			MC	CS
	Rev	Date	Drawn	Description	Ch'k'd	App'd																
P1	28/07/22	CD	First Draft	MC	CS																	
Drawing Number Figure 20.4					Scale at A3 1:8,000			Security	Status	Rev												
								STD	PRE	P1												

Get in touch

You can contact us by:



Emailing at info@cwwtpr.com



Calling our Freephone information line on **0808 196 1661**



Writing to us at **Freepost: CWWTPR**



Visiting our website at 

You can view all our DCO application documents and updates on the application on The Planning Inspectorate website:

<https://infrastructure.planninginspectorate.gov.uk/projects/eastern/cambridge-waste-water-treatment-plant-relocation/>